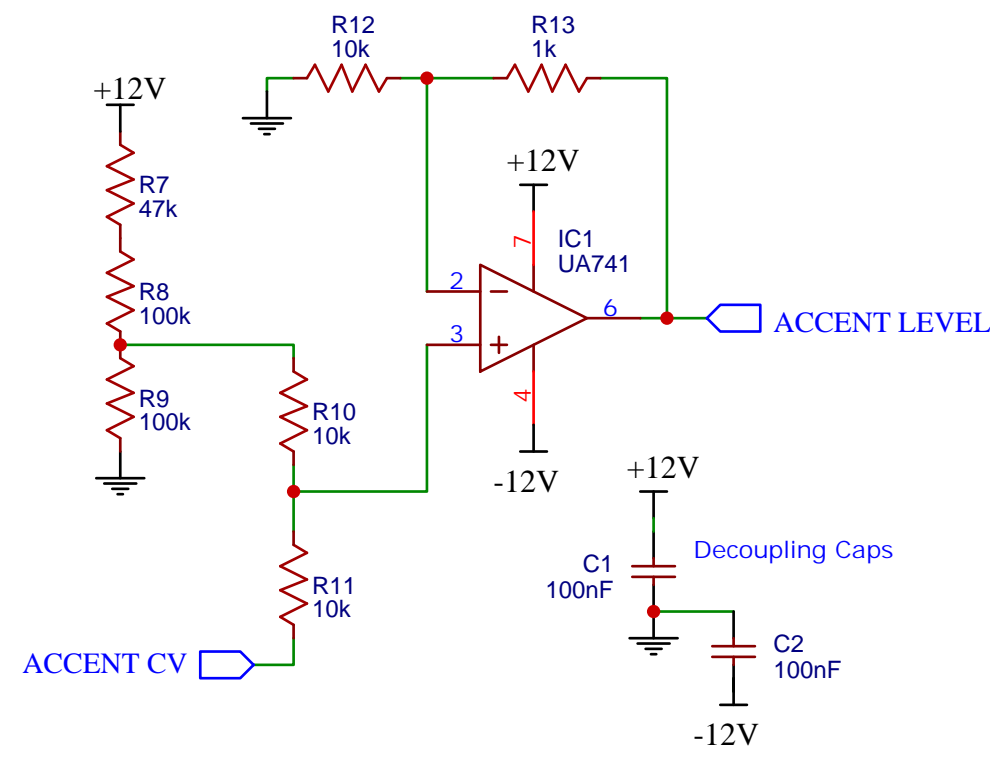


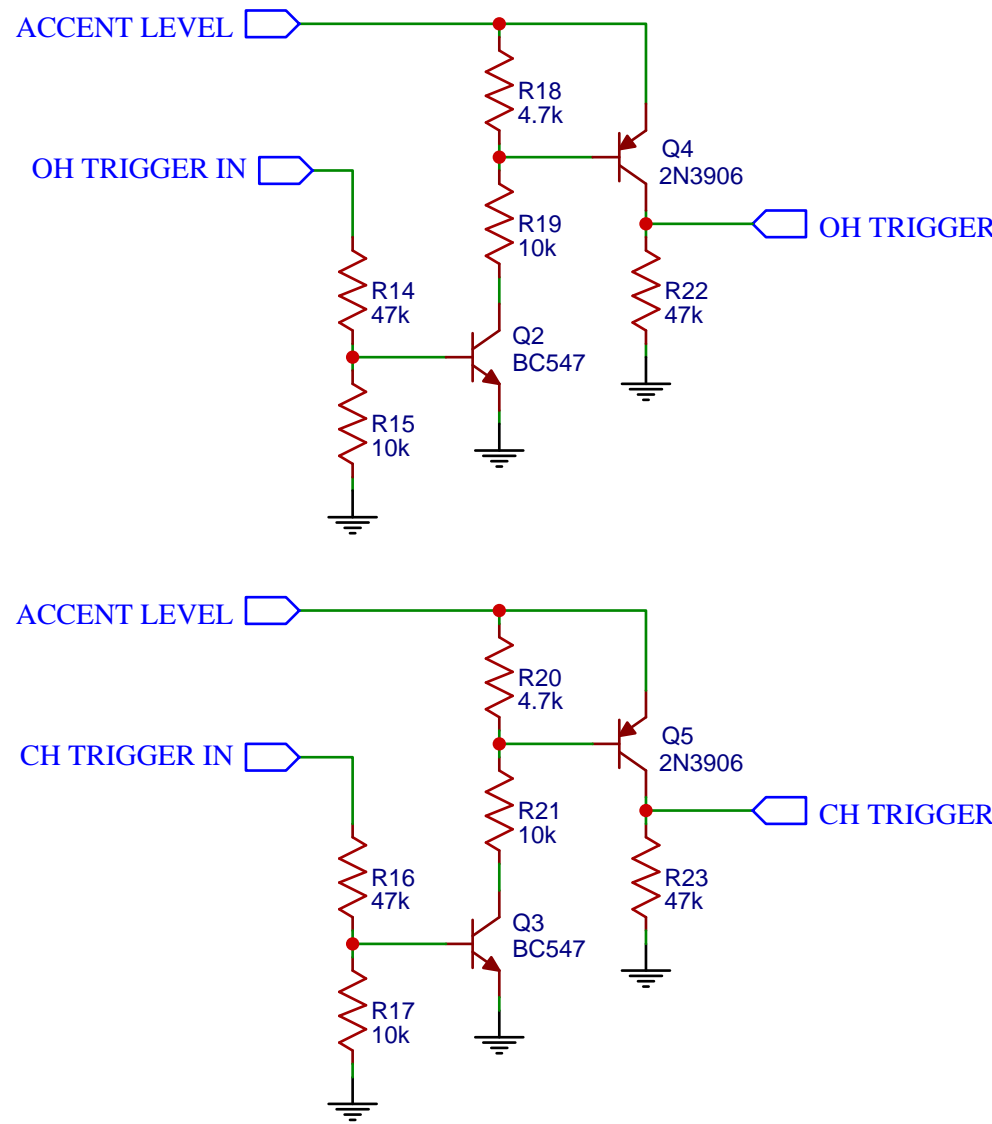
## Accent Mixer

Sets the amplitude for the triggers



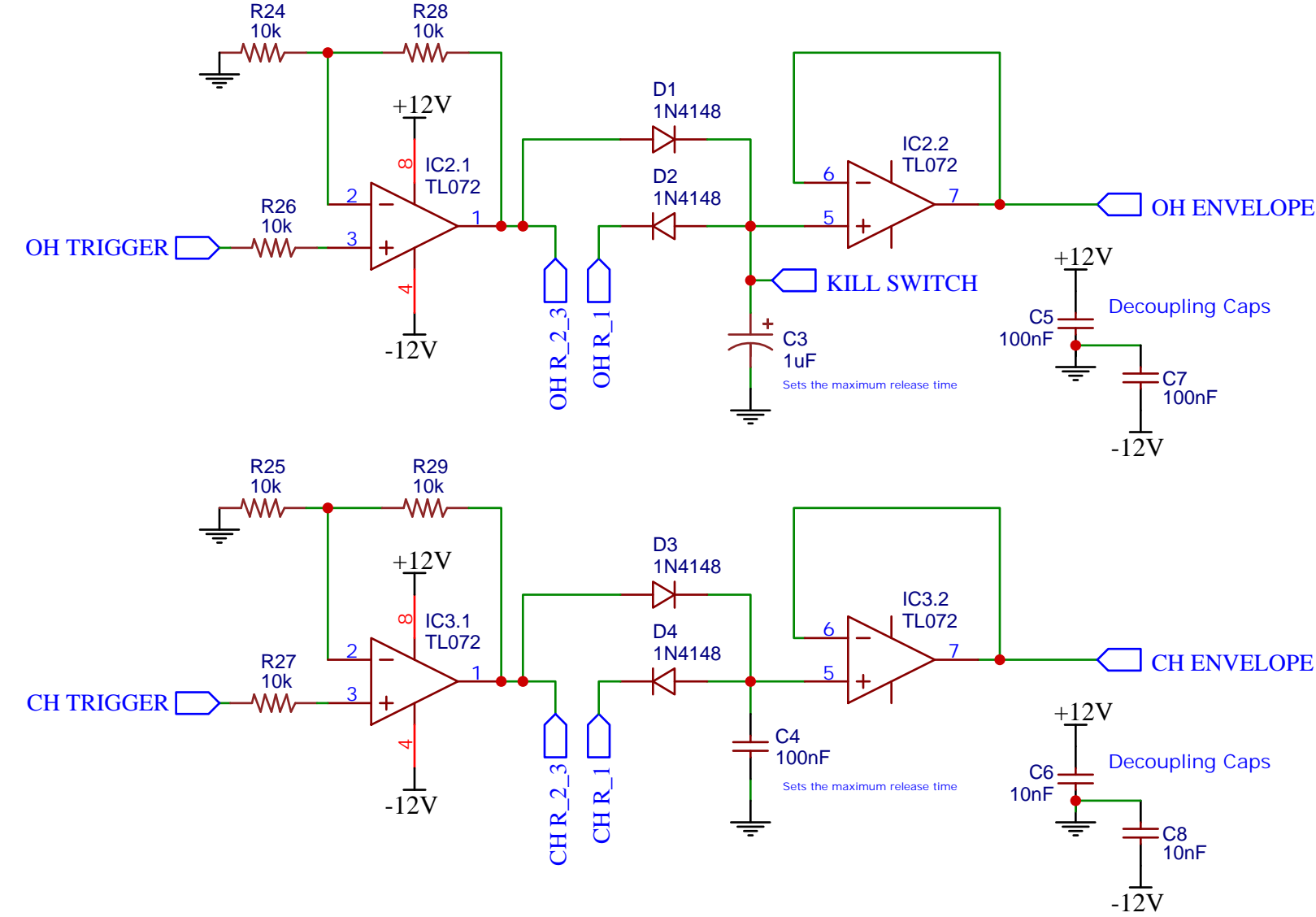
## Trigger Logic

Creates the internal triggers with accent levels  
Based on the TR-808 service manual



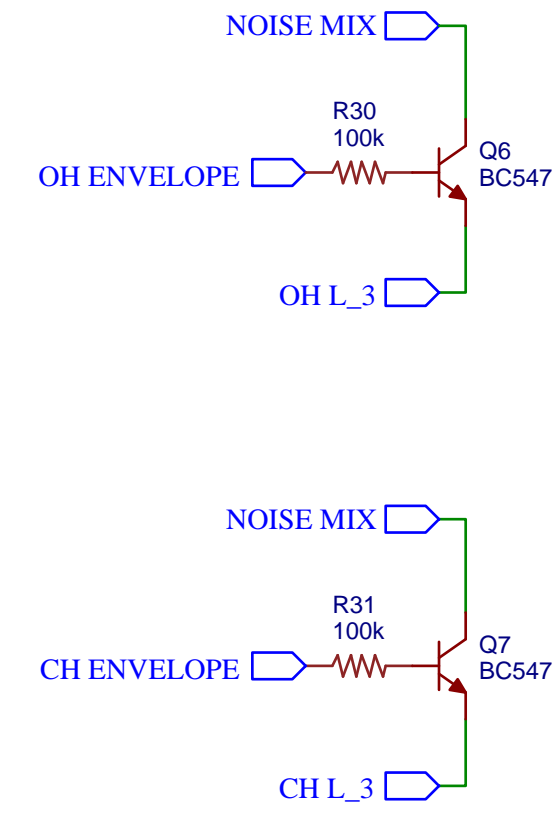
## Envelope Generators

Based on "simple diy envelope generator" by LOOK MUM NO COMPUTER



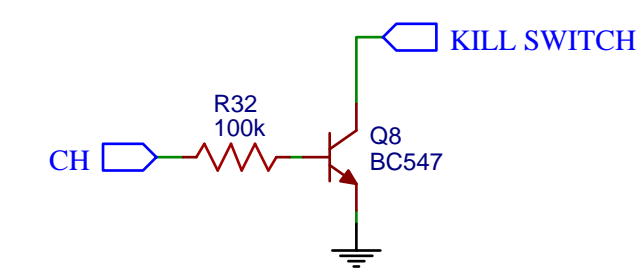
## VCAs

Based on "LOGIC NOISE: MORE CMOS COWBELL!"  
by Elliot Williams via hackaday.com



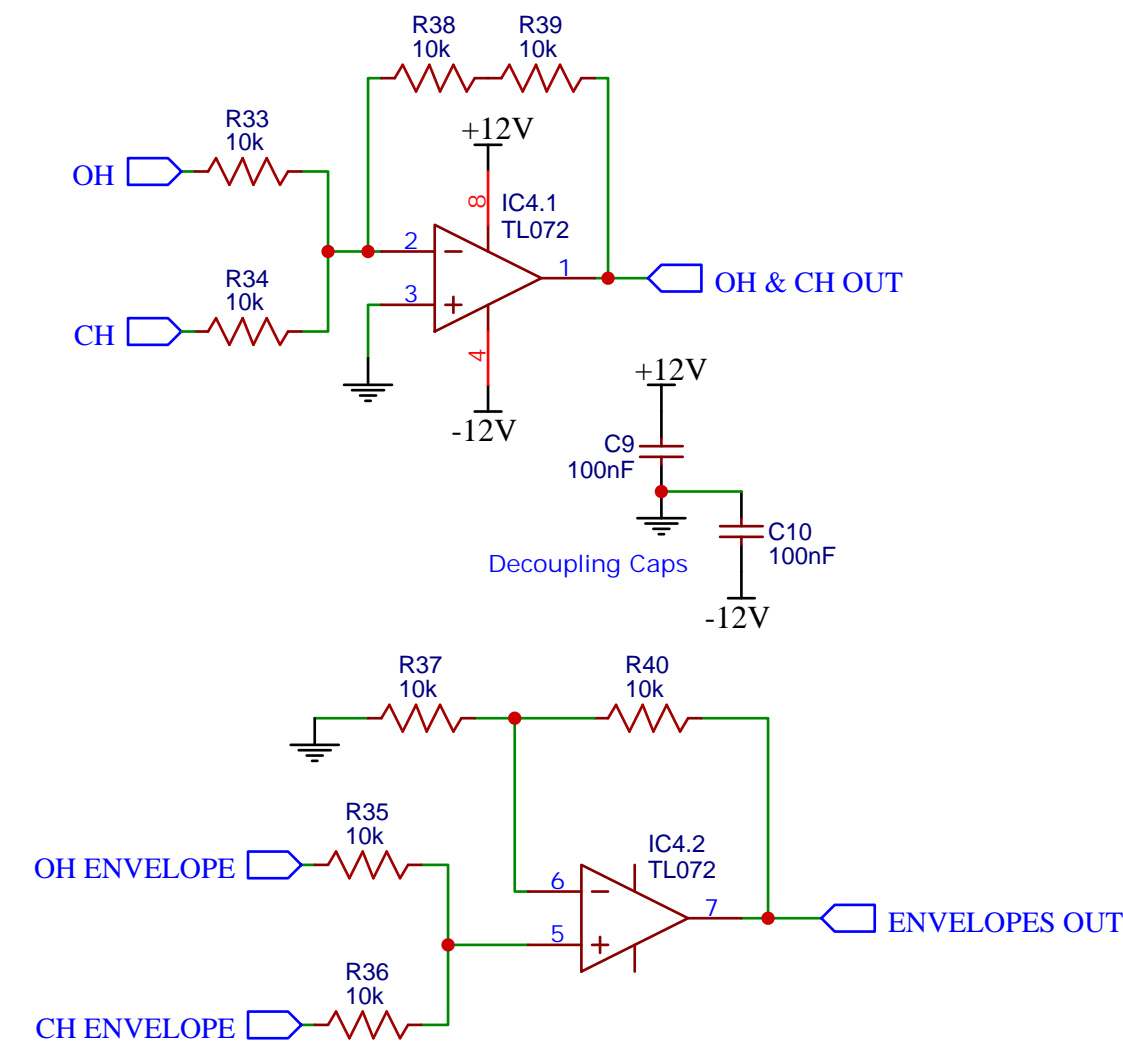
## Kill Switch

CH stops the OH immediately by uncharging its release cap  
Inspired by the TR-808

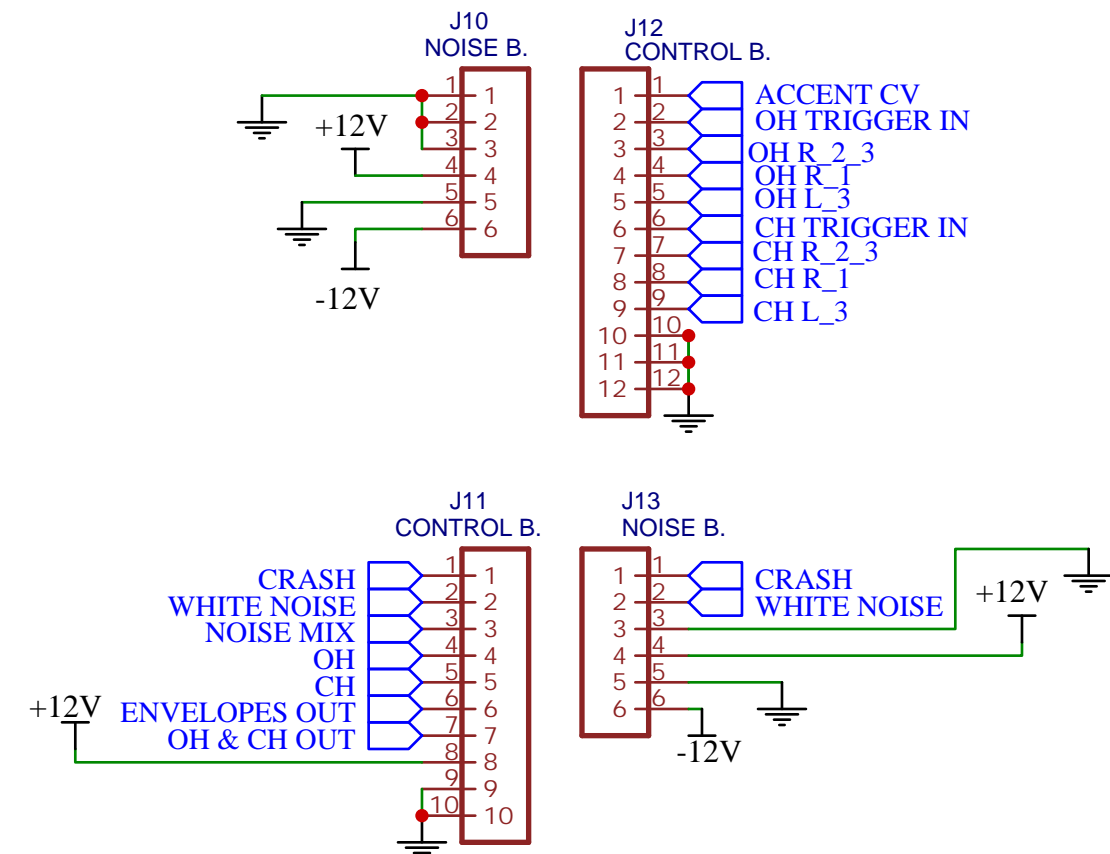


## Amplification

Mixes the signals for the output

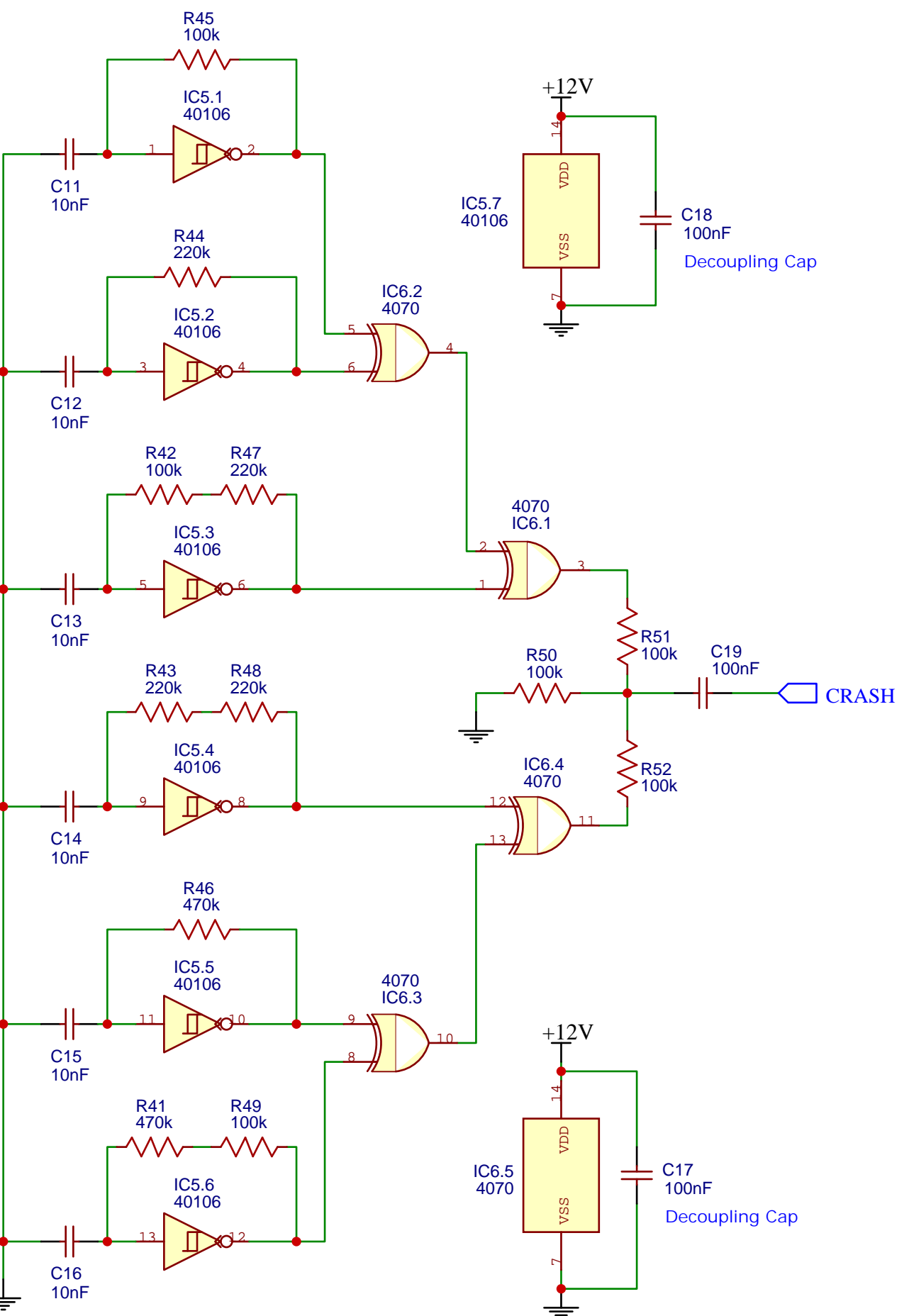


## Board Connectors



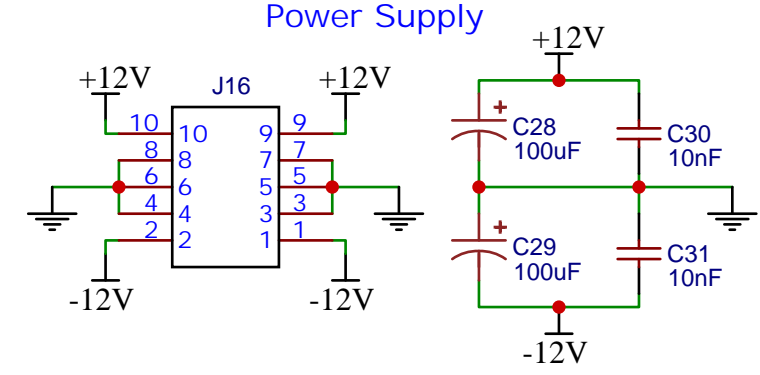
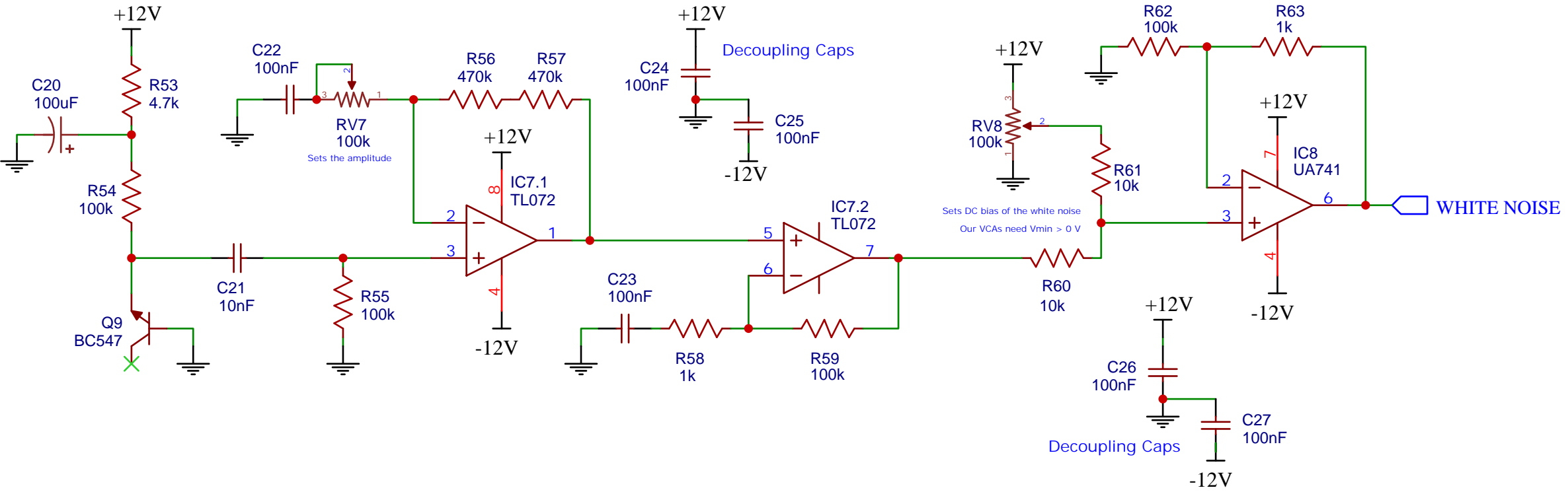
# Crash (Metallic Noise)

Based on "LOGIC NOISE: MORE CMOS COWBELL!"  
by Elliot Williams via hackaday.com



# White Noise

Based on "White Noise Source" by Ren é Schmitz via schmitzbits.de



# Board Connectors

